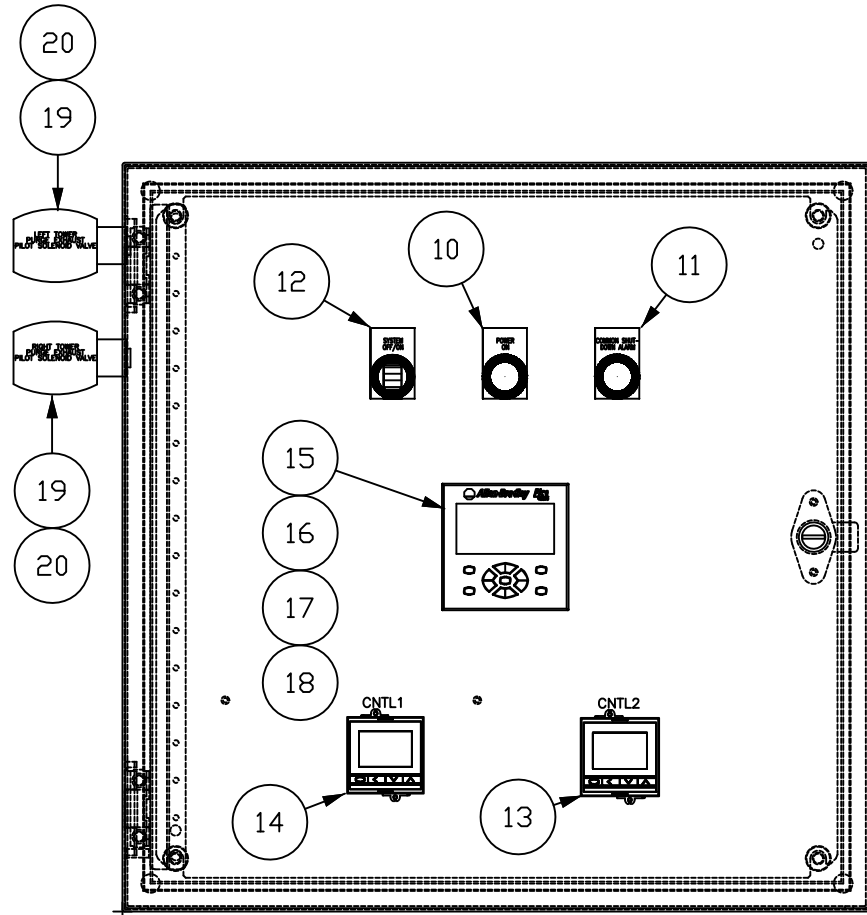
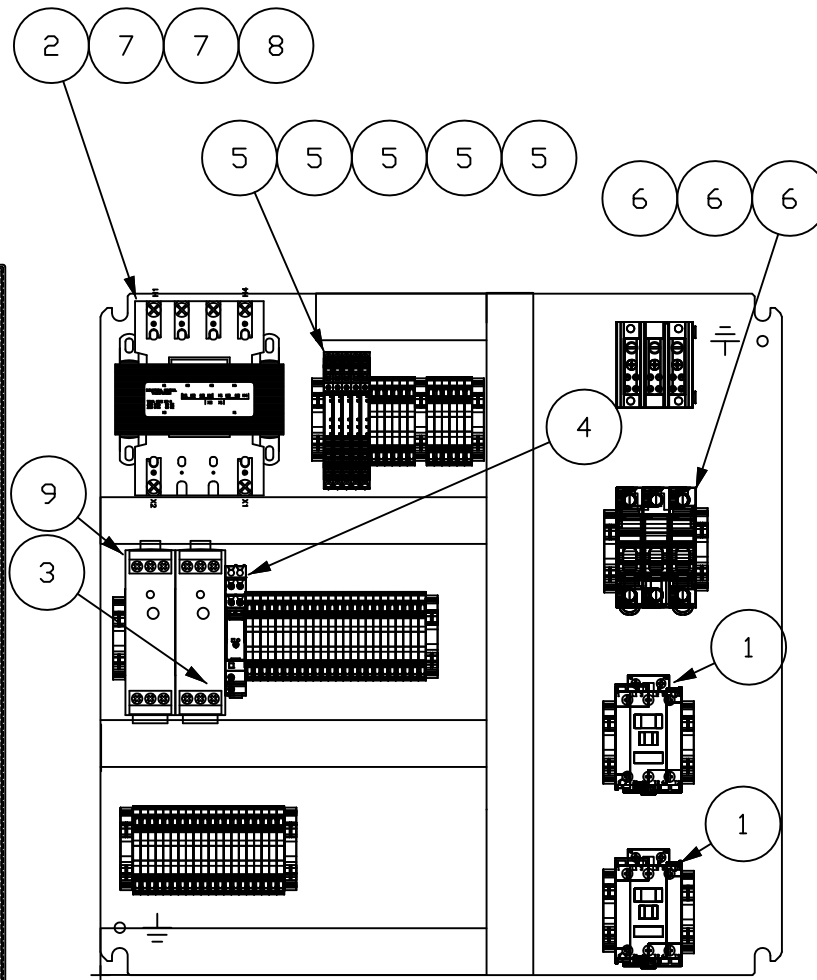


DOOR PANEL FRONT VIEW

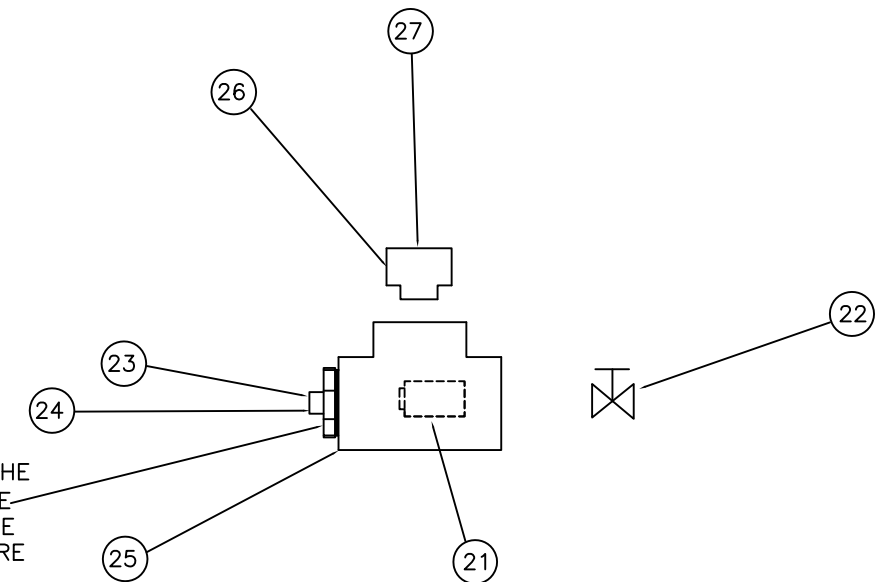


SUB PANEL FRONT VIEW

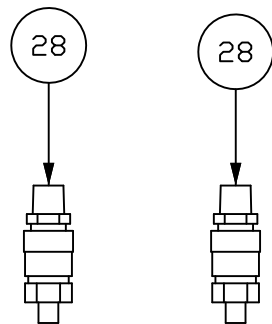


ITEM #	AIRCEL#	DESCRIPTION
1	AG3948888	HEATER CONTROL CONTACTOR, 10 HP @ 460V, COIL 120V/60HZ, CONTACTS RATED 16A (AC-3)
2	AG3948911	CONTRC CIRCUIT TRANSFORMER, 460 VAC INPUT, 120 VAC OUTPUT, WITH FUSE HOLDERS
3	AG3948924	DRYER SYSTEM CONTROLLER POWER SUPPLY 115VAC TO 24VDC
4	AG3948855	RELAY, SCREW TYPE TERMINAL BLK , 110...125V AC/DC,DPDT,10A CONTACTS
5	AG3948856	RELAY, SCREW TYPE TERMINAL BLK , 110...125V AC/DC,SPDT,6A CONTACTS
6	AG3106801	HEATER FUSES, 15 AMP, TIME DELAY CLASS CC 600V, DUAL ELEMENT
7	AG3480363	TRANSFORMER PRIMARY FUSES, 1-1/2 AMP, CLASS CC, TIME DELAY CURRENT LIMITING, 600V
8	AG3329701	TRANSFORMER SECONDARY FUSE, 3 AMP, CLASS CC, TIME DELAY CURRENT LIMITING, 600V
9	AG3934769	EMS HUMIDITY SENSOR POWER SUPPLY, 115VAC TO 5VDC
10	AG3939623	POWER OFF/ON PILOT LIGHT, GREEN, LED, 120 VAC
11	AG3939624	COMMON ALARM PILOT LIGHT, RED, LED, 120 VAC
12	AG3939622	POWER OFF/ON SWITCH, 2-POSITION, MAINTAINED
13	AG3934780	TEMPERATURE CONTROLLER, J-TYPE THERMOCOUPLE
14	AG3934781	TEMPERATURE CONTROLLER, K-TYPE THERMOCOUPLE
15	AG3934775	DRYER SYSTEM CONTROL PROCESSOR
16	AG3934777	DRYER SYSTEM CONTROL I/O MODULE
17	AG3934778	DRYER SYSTEM CONTROL DISPLAY
18	AG3934785	DRYER SYSTEM CONTROL OUPUT EXPANSION MODULE
19	AG3101501	PURGE EXHAUST PILOT SOLENOID, VALVE, 3-WAY, 115VAC-60HZ
20	1C900900-US	SILENCER, SINTERED BRONZE, 1/8" FOR PURGE SOLENOID
21	AG3999611	EMS RH SENSOR FOR IN-BED AIR SAMPLING
22	AG3933837	EMS SENSOR SYSTEM DISCHARGE ADJUSTABLE NEEDLE VALVE
23	AG3934743	EMS HUMIDITY SENSOR PRESSURE TIGHT DIN CONNECTOR, 4-PIN
24	AG3934325	EMS HUMIDITY SENSOR CABLE, 4-WIRE
25	AG3934168	EMS SENSOR SAMPLE CELL SEAL KIT
26	AG3934097	EMS SENSOR SYSTEM PRIORITY VALVE REPLACEMENT SEAL KIT
27	AG3933979	EMS SENSOR SYSTEM PRIORITY VALVE, ALUMINUM BODY
28	AG3936238	TOWER PRESSURE TRANSDUCER

EMS SAMPLE CELL



PRESSURE TRANSDUCERS



NOTE: DO NOT REMOVE THE DIN CONNECTOR; WHEN REPLACING THE SENSOR, LOOSEN THE (4) ALLEN HEAD SCREWS AND REMOVE THE ENTIRE SIDE OF THE SENSOR HOUSING. THE CONNECTIONS INSIDE MAY TWIST AND BREAK IF THE DIN CONNECTOR IS REMOVED BEFORE DISCONNECTING THE WIRES INSIDE.

NOTES:

REV	REVISION DESCRIPTION	APPROVAL/DATE
△		/
△		/
△		/

THIS DOCUMENT CONTAINS INFORMATION THAT IS CONFIDENTIAL AND/OR PROPRIETARY TO AIRCEL CORP. ALL RIGHTS TO DISCLOSE, COPY, REPRODUCE, MANUFACTURE FROM OR DISPOSE OF THIS DOCUMENT OR ITS CONTENTS ARE RESERVED UNLESS SPECIFIED IN WRITING BY AIRCEL.



PROJECT	AEHD-500 SPARE AC	DRAWN BY	TRAVIS.RYAN	DATE	08/10/2015
TITLE DESCRIPTION	ELECTRICAL ASSEMBLY	CHK'D BY	MICHAEL.SCHWEER	DATE	08/10/2015
PAGE DESCRIPTION	SPARE PARTS	JOB No.		DRAWING No.	